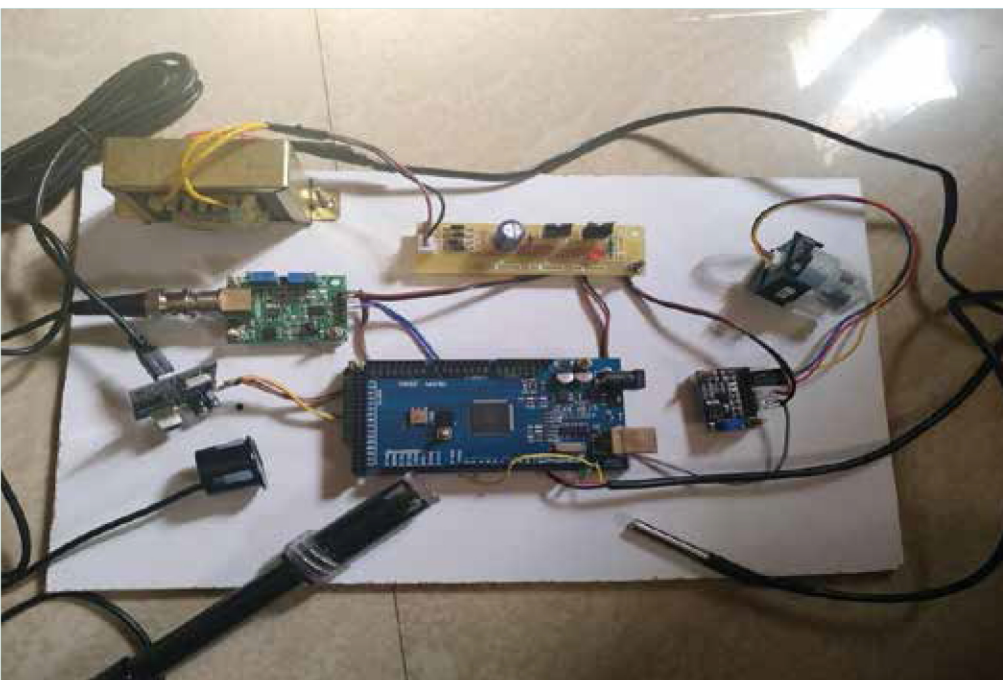


Fishes are coldblooded creatures. Their development depends intently on the natural circumstances. Water quality – determined through parameters like water level, turbidity, pH, temperature, salt, nitrates, carbonates – is a basic factor. But monitoring the fishpond can be quite challenging.

LabVIEW interfaced fishpond checking framework is structured utilising Arduino Mega to observe water level, temperature and time to guarantee development and survival of amphibian life. The Arduino board is interfaced to the LabVIEW LINX with all sensors. The nature of water is observed continuously. The detected information is communicated to the farmer through the cloud. Therefore, preventive measures can be taken and misfortunes can be avoided.



78 PROJECT

LABVIEW INTERFACED PISCICULTURE MONITORING SYSTEM

Navyashree S
ECE

Nithya Lakshmi S
ECE